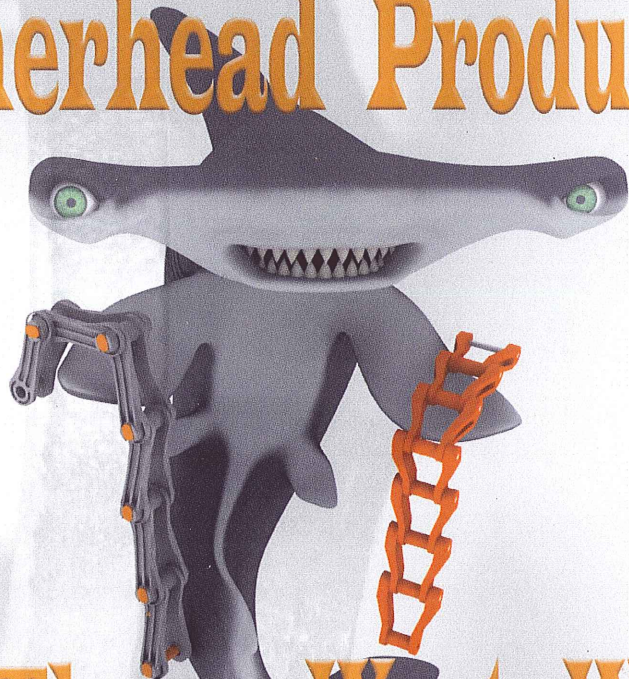
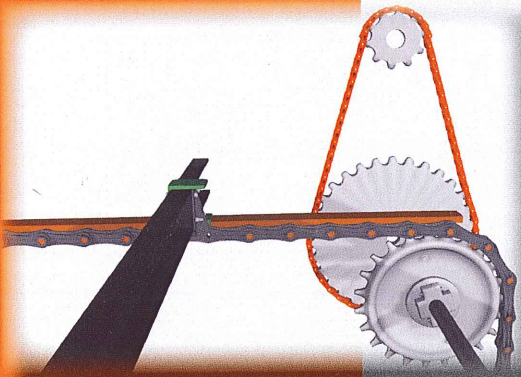


CAN AM CHAINS

Hammerhead Products

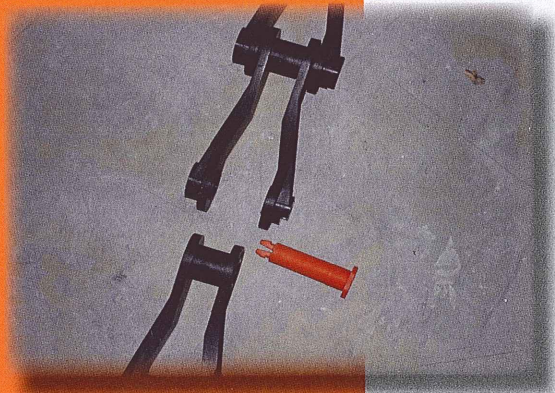


**For The Waste Water
Industry**



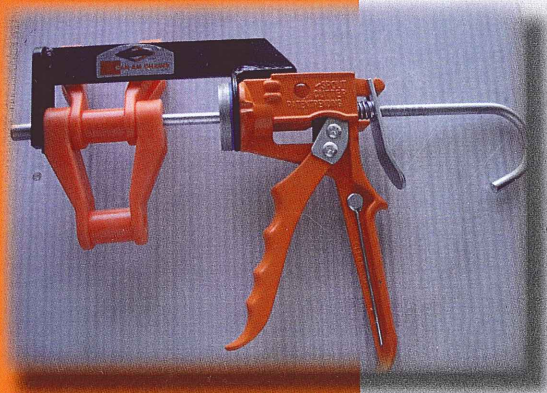
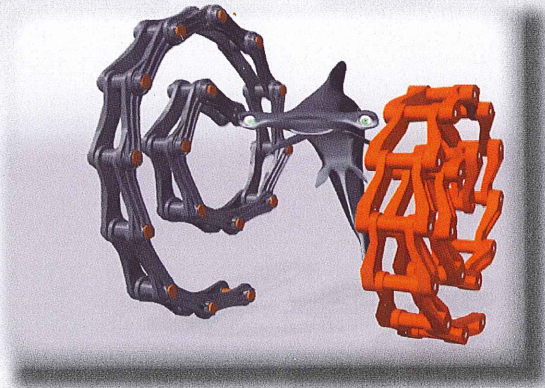
HAMMERHEAD SYSTEMS

Can-Am Chains "Hammerhead Waste Water Systems" feature our 2 piece 720 modified polymer chain and pin product. This along with our NH78 Drive Chain, Thermoset Sprockets, Aluminum Flytes, 2500 Series Bearings and Wear/Guard UHMW wear plate make our system one of the most unique ones available on today's market. Regional inventories and field technicians insure that your systems perform to their utmost reducing costly down time. Can-Am Chains - Building chain & sprockets since 1966



720S CHAIN

Can-Am Chains Hammerhead 720S chain is a two piece system. The chain body is manufactured from a modified Type 6 Nylon that increases its elasticity when submerged into water. This elasticity gives it up to a 21 degree deflection rate giving it the ability to withstand flyte misalignment. The side bar ribs have been reinforced and thickened to increase it's torsional and tensile strengths. The chain pin is manufactured from a co-polymer Acetal that does not absorb moisture thus preventing any swelling between the pin and chain link, reducing chain binding.

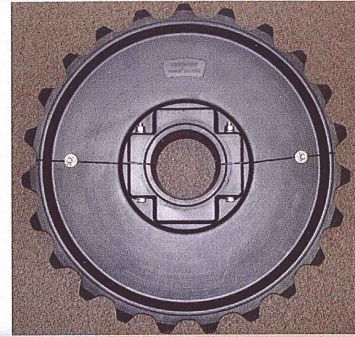


NH78 CHAIN

Can-Am Chains Hammerhead NH78 drive chain is manufactured from an Acetal non water absorbing Polymer c/w a stainless steel pin. The chains 6000+ /lbs of pull force make it one of the strongest plastic 78 chains on today's market.

NYLON SPROCKETS

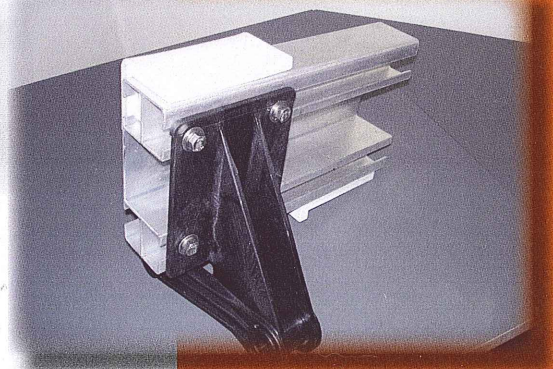
Can-Am Chains Hammerhead Nylon Sprockets are manufactured from an abrasive resistant thermoset cast 6 nylon. Corrosion resistant, light weight and built in lubricity result in reduced maintenance cost and reduced chain wear.



ALUMINUM FLYTES

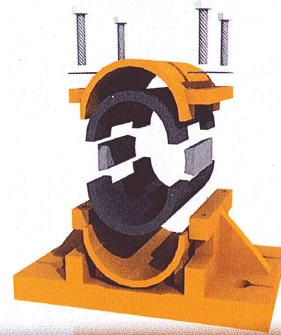
Can-Am Chains Hammerhead Aluminum Flytes are a cost effective alternative to conventional FRP and wood flytes currently used in today's clarifiers. These flytes are highly corrosive resistant and are 100% recyclable. Their slotted mounting face allows for easy flyte alignment and eliminates the requirement of a filler block.

These 8" flytes are light weight and available in long lengths.



2500 SERIES BEARING

Can-Am Chains Hammerhead 2500 series bearings are a split bearing block with replaceable roll out plastic bearing inserts that are easy to install resulting in reduced maintenance cost.



WEAR/GUARD UHMW

Can-Am Chains Hammerhead Wear/Guard UHMW is a custom engineered formulation that has 2 integral layers of polymer molded together in two contrasting colours. The top layer (black) is a cross linked UV stabilized formulation that offers premium wear resistance against sliding abrasion. The bottom layer (orange) is a wear indicator that when viewed from above will indicate that the wear plate has performed to a point where it needs to be replaced. "A Preventative Maintenance Tool".





USA usasales@can-amchains.com

HEAD OFFICE OREGON

PO Box 453
15151 SE Minuteman Way
Clackamas, OR 97015
Phone: (503) 657-1158
Fax: (503) 656-7549
Toll Free: 1-800-547-6274

LOUISIANA BRANCH

2095 N. Hearne Avenue
Shreveport, LA 71107
Phone: (318) 227-8006
Fax: (318) 424-7751
Toll Free: 1-800-321-8846

ALABAMA BRANCH

167 Distribution Drive
Birmingham, AL 35209
Phone: (205) 942-2617
Fax: (205) 942-4975
Toll Free: 1-800-824-0674

NORTH CAROLINA BRANCH

7020 Stanley Park Drive
Rocky Mount, NC 27804
Phone: (252) 451-0636
Fax: (252) 451-0833
Toll Free: 1-888-856-0744

EUROPE europe@can-amchains.com

HEAD OFFICE UK

Tundry Way
Chainbridge Road
Blaydon NE 21-5SJ UK
Phone: +44 191 414 8688
Fax: +44 191 414 6105

CANADA cansales@can-amchains.com

HEAD OFFICE BRITISH COLUMBIA

8355 128TH Street
Surrey, B.C.
V3W 4G1
Phone: (604) 599-1522
Fax: (604) 599-4115
Toll Free: 1-800-663-3136

NORTHERN B.C. BRANCH

3687 Opie Crescent
Prince George, BC V2N 1B9
Phone: (250) 562-7727
Fax: (250) 562-9603
Toll Free: 1-877-399-3136

ALBERTA BRANCH

#2204 7th Street
Nisku, Alberta T9E 7Y2
Phone: (780) 955-3993
Fax: (780) 955-3994
Toll Free: 1-800-832-7556

ONTARIO BRANCH

5050 Dufferin Street
Toronto, Ontario M3H 5T5
Phone: (416) 663-2626
Fax: (416) 663-0774
Toll Free: 1-800-648-4225

CHILE camchainchile@can-amchains.com

COMERCIALIZADORA CAM-CHAIN CHILE LIMITADA

Avenida Golfo De Arauco #3660
Parque Industrial
Coronel, Chile
Phone: +56 41 285 3881
Fax: +56 41 285 3885
Toll Free: +56 41 275 1528



CAN-AM CHAINS LTD.



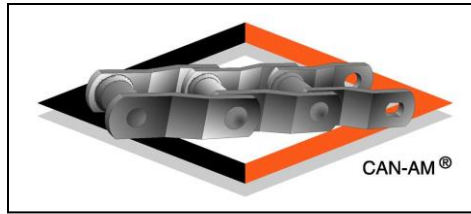
Rectangular Tank Inspection Data

<u>Drive Motor</u>	78-Drive Sprocket Shaft Size	Teeth _____ Diam _____
<u>Drive Shaft</u>	78-Bull Tooth Sprocket 720-Drive Sprockets Shaft Size	Teeth _____ Teeth _____ Qty _____ Diam _____
<u>Idler Shaft 1</u>	720-Idler Sprockets Shaft Size	Teeth _____ Qty _____ Diam _____
<u>Idler Shaft 2</u>	720-Idler Sprockets Shaft Size	Teeth _____ Qty _____ Diam _____
<u>Idler Shaft 3</u>	720-Idler Sprockets Shaft Size	Teeth _____ Qty _____ Diam _____
<u>Chain</u>	78-Drive Chain 720-Clarifier Chain	Qty _____ Ft Qty _____ Ft
<u>Flytes</u>	Height Length	Inch _____ Feet _____ Qty _____
<u>Wear Strip</u>	Width _____ Inch	Length _____ Feet

End User: _____

City: _____ Contact _____

Customer: _____ Rep _____



Hammerhead Waste Water Parts and Components

Chains - Metallic

WH720, WH78, WH132, LXS882, SS111, WH82
Available in Carbon Steel, SS316, SS410, SS416

Chains Non- Metallic

720, NH78, NH45,
Modified Thermoset Polymers

Sprockets

Welded Steel, Cast Steel, Thermoplastic, Thermoset
Idlers, Drives, Drives c/w Shear Pins

Components

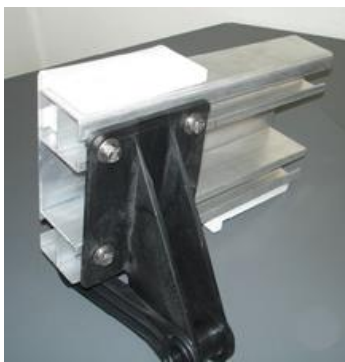
UHMW Static Sleeves & Wear Plate, Thermoset
Wear & Return Shoes, Wipers & Scraper Blades

Accessories

Aluminum Flytes, Auger Trough Liners, Bearings,
Shafting, Wall Mount Stub Shafts

Services

Manufacturing, Design, Site Evaluation, Installation
Supervision, Regional Inventories



USA: usasales@can-amchains.com

Canada: cansales@canamchains.com

www.can-amchains.com

(800) 547-6274

The Solutions People

(800) 663-3136

