

# CAN-AM CHAINS

## PLASTIC SELECTION CHART



### UHMW ORANGE CHAIN CAP

Has a low co-efficient of friction, are non-marking & recommended for transfers to minimize product damage and maximize chain life.



### REVERSE BEVEL ORANGE CHAIN CAP

Has a low co-efficient of friction, are non-marking & recommended for transfers to minimize product damage and maximize chain life.



### 80A DUROMETER BLUE CHAIN CAP

Designed for applications where minimal slippage and product damage is required such as slight inclines.



### 75A DUROMETER GRAY CHAIN CAP

Has a high co-efficient of friction for good traction. Designed for applications where minimal slippage and product damage is required such as slight inclines.



### 75A DUROMETER BLACK CHAIN CAP

Non-marking & recommended for transfers to minimize product damage and maximize chain life. Available in reverse bevel.



### PC45 ACETAL CHAIN

Orange. Non-water absorbing, wear resistant, excellent in water applications. Stainless steel pins.



### PC78 ACETAL CHAIN

Orange. Non-water absorbing, wear resistant, excellent in water applications. Stainless steel pins.



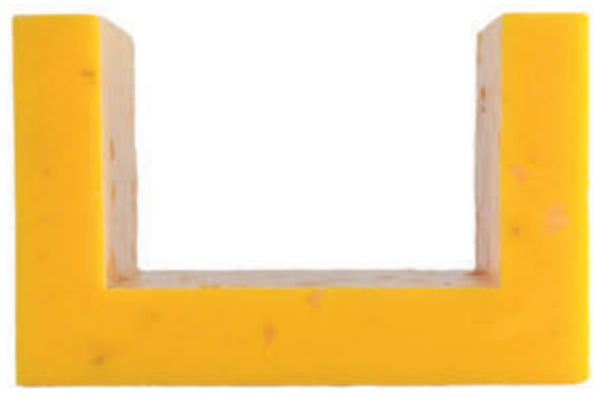
### PC78 BALLISTIC CHAIN

Off-White. Designed for use in non-marking and heavy impact applications. Also, available in Camel back. Stainless steel pins.



### UHMW ROLLER LUGS

Suitable for all Trimmer Chains. Stocked: 2-3/4" dia. x 2-1/2" tall and 3-1/2" dia. x 2-1/4" tall. Height and outside diameter can be manufactured to your specific requirements.



### 3" HIGH WALL CHANEX

suitable for: 81X, C55



### 4" TRU-TRAC

suitable for: WR78, 81X, 81XH, 81XHH



### 3" TRU-TRAC

suitable for: 81X



### 2" TRU-TRAC

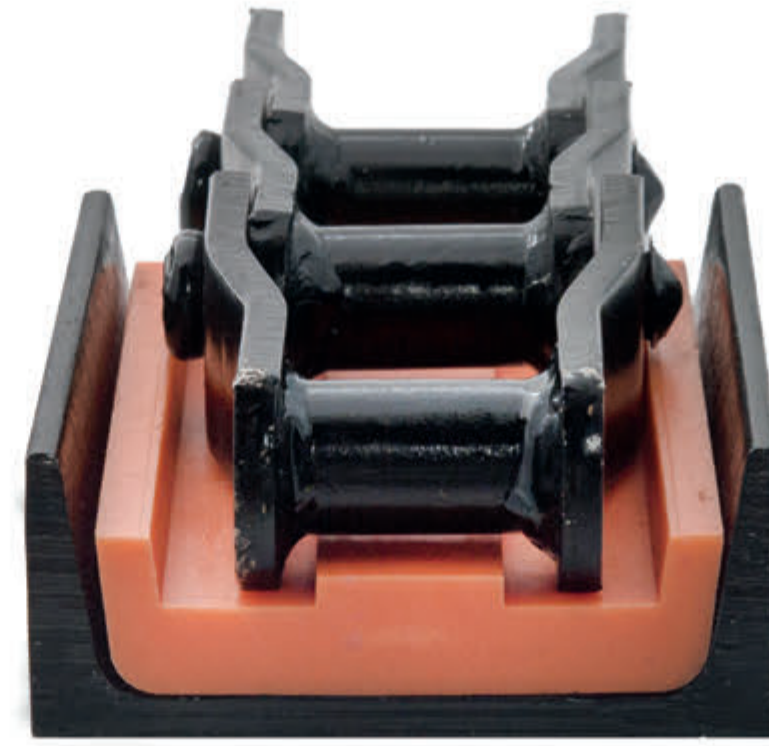
suitable for: 60, C2060H

Also stocked in 2 1/4": C2060H, C2080H



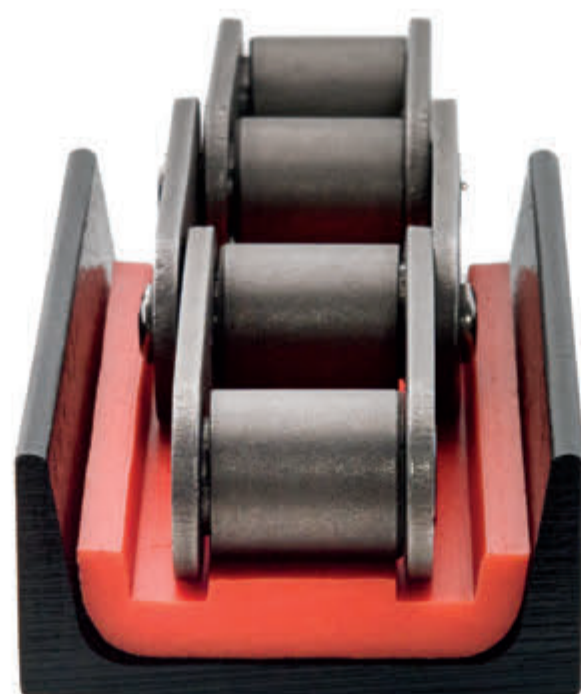
### C2 CHANNEL INSERT

suitable for: C2060, C2060H



### C4 CHANNEL INSERT

suitable for: WR78, 81X, 81XH, 81XHH



### C3 CHANNEL INSERT

suitable for: 81X



### NYTRO PVL W/ SHARPTOP

A high performance engineered plastic developed for high-speed roller, sharptop and sharp chain applications. Reduces lubrication cost and lowers operating noise decibel levels.



### 4.5" CHANEX

suitable for: WR78XHD, WR82, H130, H78A



### 4" CHANEX

suitable for: WR78, 81X, 81XH, 81XHH



### 3.5" CHANEX

suitable for: 81XH, 81XHH



### 3" CHANEX

suitable for: 81X, C55



### 2.5" CHANEX

suitable for: 81X



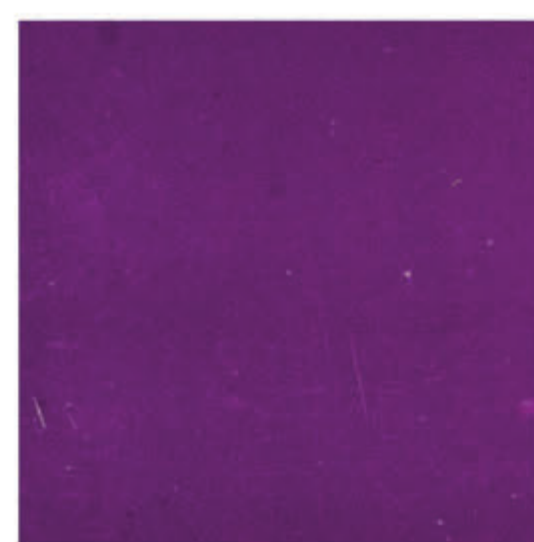
### 2" CHANEX

suitable for: 60, 60H, 60-1ST, C2060, C2060H



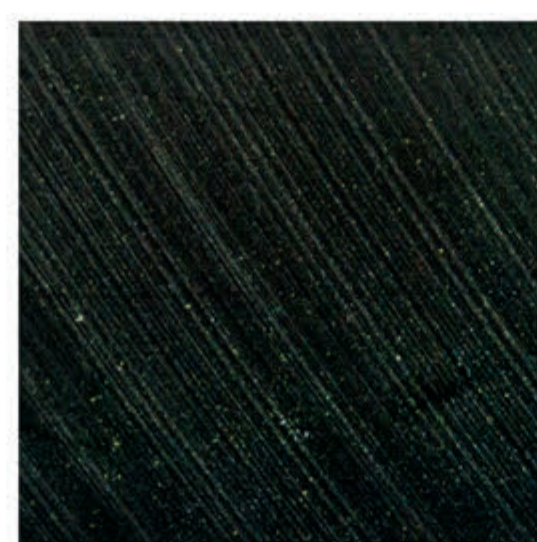
### HIGH PERFORMANCE UHMW ICE

Designed for high load & tough abrasive applications. The mechanical properties have been modified to increase its hardness and dimensional stability.



### PERFORMANCE PURPLE

A UV resistant, high performance, wear material designed for high load and tough abrasive applications. The mechanical properties have been modified to increase its hardness and dimensional stability.



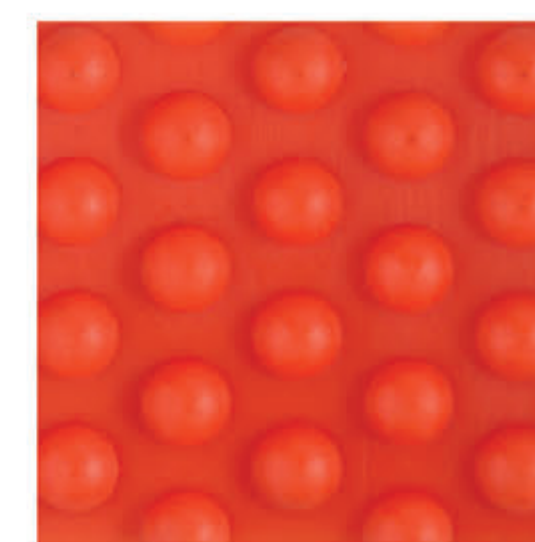
### PACIFIC BLACK

Can-Am "Pacific Black" is made up of a blend of Virgin UHMW resin and recycled UHMW-PE. It has good wear characteristics in all manner of applications.



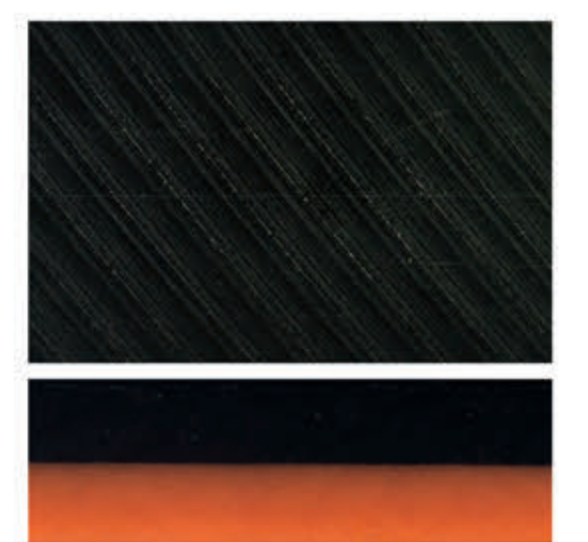
### POWER PLATE

An excellent choice for chain wear plate where minimal drag needs to be obtained. Also excels in most bulk material handling liners as its low coefficient of friction properties allows faster material release than regular wear materials.



### POWER ROCKET PLATE

A 100% UHMW sheet with hemispherical nodules, replaces high maintenance ball transfer units. Virtually eliminates static, slip-stick and debris problems. Super slick and maintenance free.



### WEAR GUARD

Engineered UHMW formulation that has two integral layers of polymer molded together. The black top layer offers premium wear resistance. The orange bottom layer is a wear indicator that will indicate that the wear plate has performed to a point where it needs replaced.

### OTHER AVAILABLE ITEMS

